



COMPOSITE INSULATOR

Catalog DS & LP Series
per CSA/ANSI
Deadend / Line Post
15 kV to 69 kV

NANJING ELECTRIC (GROUP) CO.,LTD

www.nanjing-insulators.com



INTRODUCTION

Nanjing Electric (Group) Co., Ltd., formerly Nanjing Electro - Ceramic Factory, was founded in 1936. It is one of the oldest and largest scale manufacturers of insulators in China. Since 2004 our company has developed composite insulators independently, and owns strong technology development capabilities. Our product offering includes several categories of both AC and DC types from 10 -1000kV suspension composite, post composite, cross arm composite, pin - type composite, and electrified railway insulators. The advanced technology of materials and manufacturing processes are first class, and performance indicators are consistent with international standards.



Our Quality Control system is monitored by our own high - voltage laboratory, and our production process is in accordance with international standards. Well appointed testing equipment ensure consistent quality and high performance of our products. The factory has passed and maintains ISO9001 Quality System Management, ISO14001 Environmental Management, OHSMS 18001 Occupational Health and Safety Management and PCCC Product Certification. Inspired to deliver the highest quality, and maintain a leadership role in the industry, Nanjing Electric (Group) Co., Ltd. continues to seek material, design and process optimization.



PERFECT INSPECTION EQUIPMENT



COMPOSITE INSULATOR

www.nanjing-insulators.com



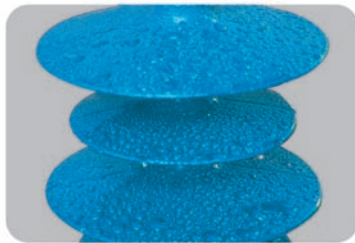


COMPOSITE INSULATOR

www.nanjing-insulators.com

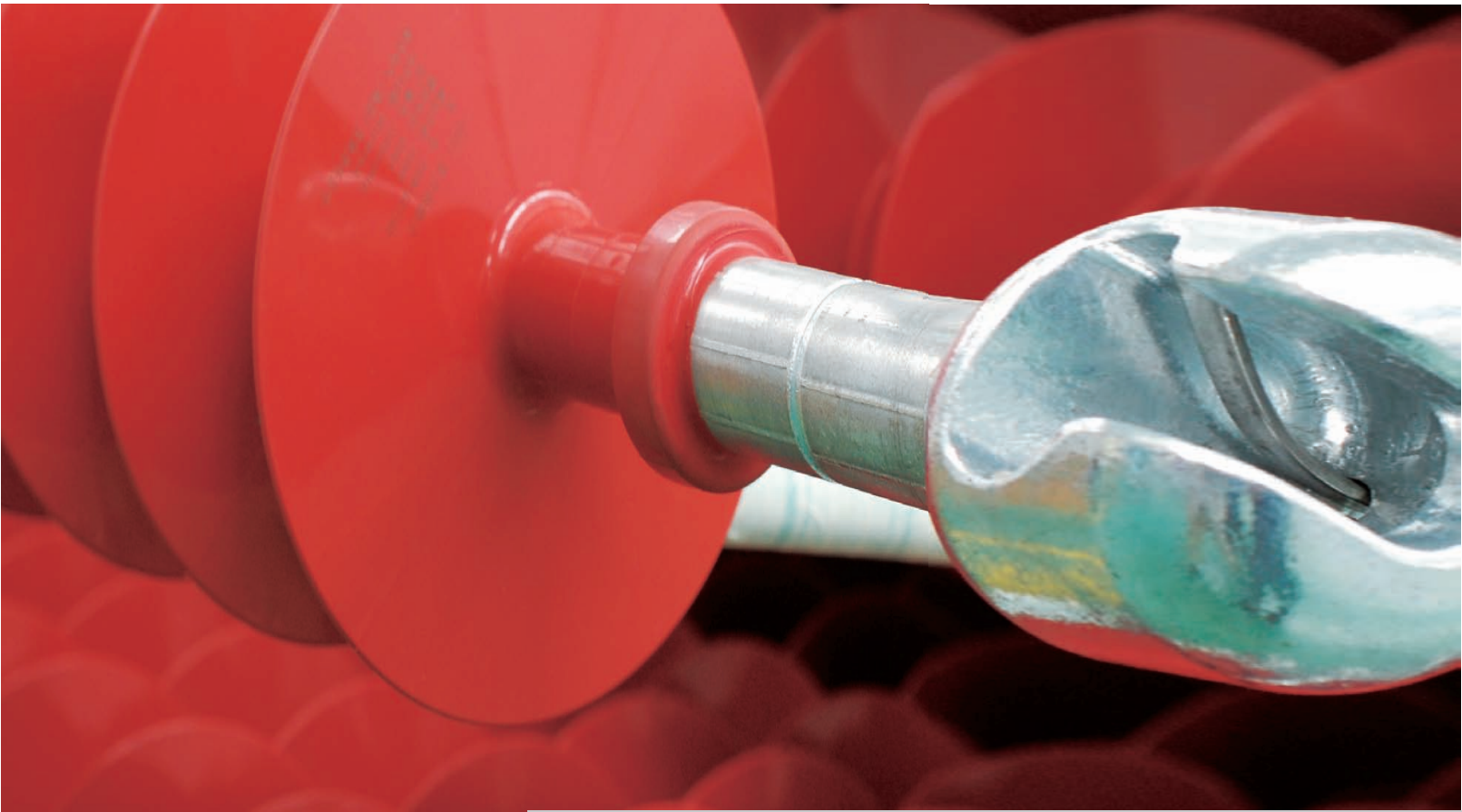


SUPERIOR PRODUCTS



COMPOSITE INSULATOR





COMPOSITE INSULATOR

Taking the world's leading composite insulator manufacturing technology, Nanjing Electric (Group) Co., Ltd. Has developed all series composite insulators products including 10~1000kv independently and successfully. Product performance and manufacturing capacity are characterized international top-class level.

As the porcelain insulator's replacement products, silicone rubber composite insulator can improve lightning pressure, reduce the line operation and maintenance workload and blackout time to a bare minimum, improve power supply reliability.



COMPOSITE INSULATOR



500kV COMPOSITE INSULATOR

220kV COMPOSITE INSULATOR

110kV COMPOSITE INSULATOR

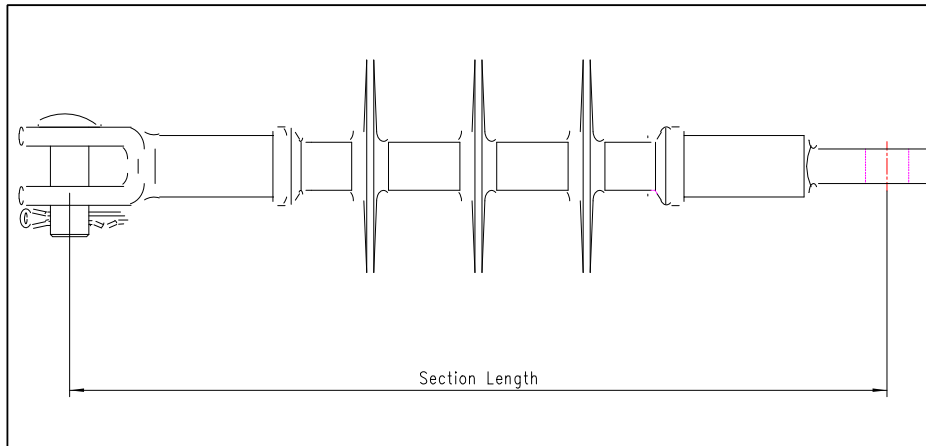
66kV COMPOSITE INSULATOR

35kV COMPOSITE INSULATOR

10kV COMPOSITE INSULATOR

COMPOSITE INSULATOR

Nanjing's silicone polymer Distribution Line Post Insulators are manufactured to meet world-class polymer insulator standards, CSA C411.6, CEA LWIWG-02, IEC 61952 and ANSI C29.18.



Dead-end Composite Technical Data Sheet

Catalog Number		UNIT	NDDS15CT3	NDDS28CT5	NDDS35CT6	NDDS35CT7	NDDS46CT8	NDDS69CT11	NDDS69CT12
Line Voltage		kV	15	28	28/35	35	46	69	69
Class	CSA	--	DS15	DS28	DS35	--	DS46	--	DS69
	ANSI	--	DS-15	DS-28	DS-35	DS-35	DS-46	DS-69	DS-69
Section Length		mm[in]	340[13.4]	440[17.3]	485[19.1]	525[20.7]	575[22.6]	710[28.0]	780[30.7]
Min. Arcing Distance		mm[in]	170[6.7]	280[11.0]	320[12.6]	360[14.2]	415[16.3]	540[21.3]	620[24.4]
Min. Leakage Distance		mm[in]	355[15.0]	585[24.4]	720[29.3]	730[33.5]	950[38.4]	1350[53.1]	1480[58.3]
Low-Frequency Wet Flashover		kV	45	90	110	130	145	180	180
Positive Critical Impulse Flashover		kV	140	190	225	250	280	385	420
Radio Influence Voltage at 1 MHz	Test	kV	10	20	25	30	30	45	45
	Max.	μV	10	10	10	10	10	10	10
Min. S.M.L		kN[lb]	70[15800]	70[15800]	70[15800]	70[15800]	70[15800]	70[15800]	70[15800]
Min. Torsional Load		N.m	50	50	50	50	50	50	50

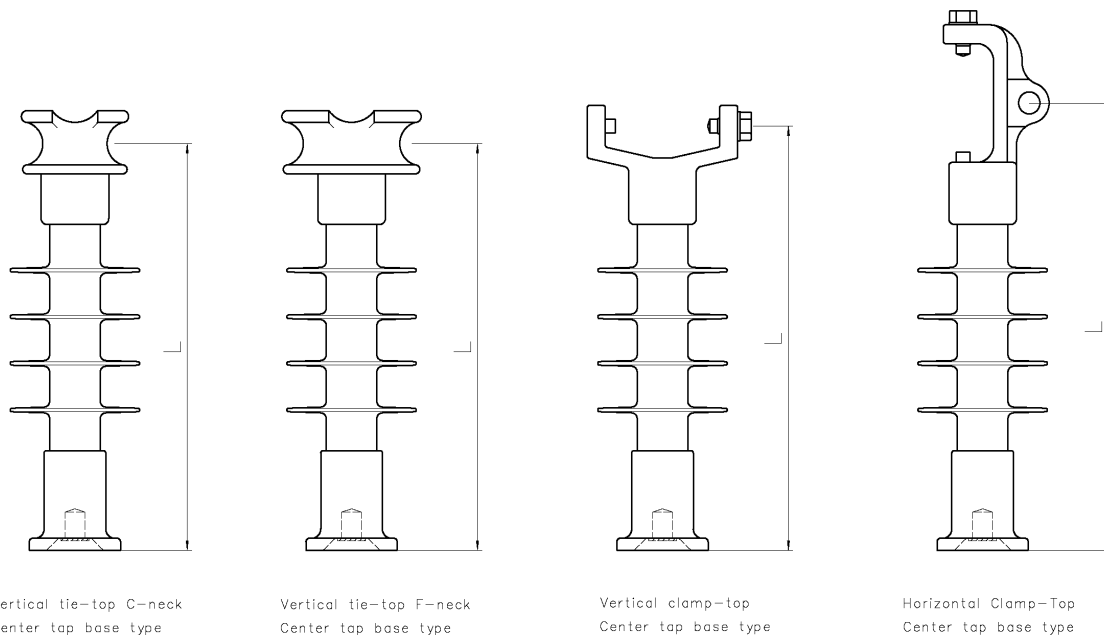
Nanjing's silicone polymer Distribution Line Post Insulators are manufactured to meet world-class polymer insulator standards, CSA C411.6, CEA LWIWG-02, IEC 61952 and ANSI C29.18.

Line Post Composite Technical Data Sheet

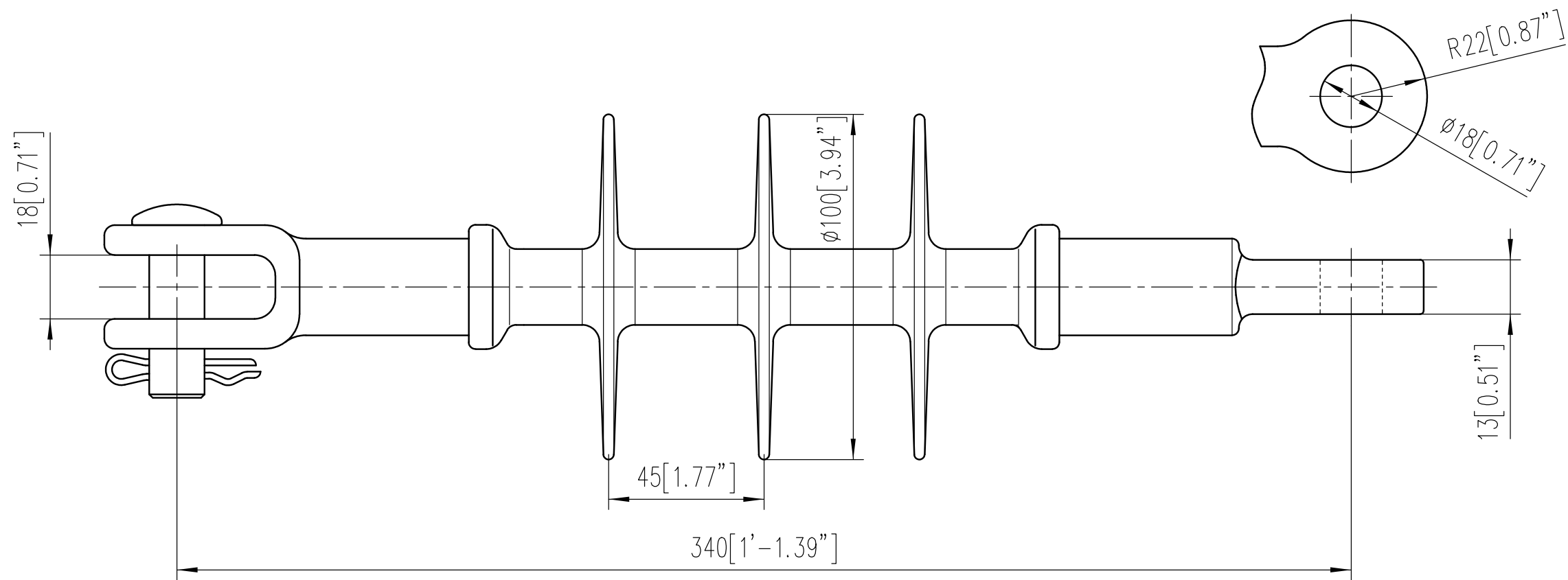
SPECIFICATION	UNIT	CATALOGUE NUMBER							
		NDLP15BTV3	NDLP25BTV4	NDLP35BTV6	NDLP46BTV7	NDLP46BTV10			
Voltage Class	kV	15	28	35	46	46/69		69	
CSA Class	-	LP15	LP25	LP28M	LP46	LP46M		---	LP69M
ANSI Class	-	51-11	51-12	51-13	51-14	---	51-15	51-16	
Section Length (L)	mm(in)	305(12.0)	365(14.4)	405(15.9)	475(18.7)	581(22.9)			
Min. Dry Arcing Distance	mm(in)	135(5.3)	195(7.7)	235(9.3)	315(12.4)	390(15.4)			
Leakage Distance	mm(in)	275(10.8)	420(16.5)	585(23.0)	745(29.3)	950(37.4)			
Max. Sheds Diameter	mm(in)	110(4.3)	110(4.3)	125(4.9)	125(4.9)	125(4.9)			
Center Hole nominal Thread Size	in	3/4	3/4	3/4	3/4	3/4			
Positive Critical Impulse Flashover	kV	115	150	180	240	300			
Low-Frequency Wet Flashover	kV	40	75	80	100	145			
Radio Influence Voltage (RIV) at 1000 kHz	Test	kV	10	20	25	30	45		
	Max	μV	10	10	10	10	10		
Specified Tensile Load(STL)	kN(lb)	22(5000)	22(5000)	22(5000)	22(5000)	22(5000)			
Specified Cantilever Load(SCL)	kN(lb)	10.7(2400)	10.7(2400)	10.7(2400)	10.7(2400)	10.7(2400)			
Max. Design Cantilever Load(MDC)	kN(lb)	5.5(1236)	5.5(1236)	5.5(1236)	5.5(1236)	5.5(1236)			
Number of Sheds	-	3	4	6	7	10			
Standard Packaging	-	3	3	3	3	3			

Section lengths are for Vertical clamp-top insulators. For others refer to Section Length Adjustment Table under End Fittings.

Nanjing's silicone polymer Distribution Line Post Insulators are manufactured to meet world-class polymer insulator standards, CSA C411.6, CEA LWIWG-02, IEC 61952 and ANSI C29.18.



Section Length Adjustment Table					
	Line End Fitting	Type	Section Length	ANSI Class	CEA Class
Vertical tie-top C-neck Center tap base type	Tie-Top (C-neck)	TC	L - 10mm(0.4in)	51-1C/51-2C 51-3C/51-4C	See Technical Data sheet
Vertical tie-top F-neck Center tap base type	Tie-Top (F-neck)	TF	L - 10mm(0.4in)	51-1F/51-2F 51-3F/51-4F	
Vertical clamp-top Center tap base type	Vertical	TV	See Technical Data sheet	See Technical Data sheet	
Horizontal Clamp-Top Center tap base type	Horizontal	TH	L + 20mm(0.8in)	51-21/51-22/51-23 51-24/51-25/51-26	



ELECTRICAL:

- . Low-Frequency Wet Flashover Voltage: 45kV Per CAN/CSA C411.5-10
- . Positive Critical Impulse Flashover Voltage :140kV (Peak) Per CAN/CSA C411.5-10

RAW MATERIALS:


- . End-fitting:
Material: Steel, Hot Dip Galvanized
Minimum Thickness Of The Galvanization:Per CAN/CSA-G164
- . Core:
Material:Epoxy & Glass Fiber
- . Silicone Housing:
Material:HTV Silicone
Color: Grey

DIMENSIONS:

- . Min. Dry Arcing Distance: 170 mm[6.9"]
- . Min. Leakage Distance: 355 mm[14.0"]
- . Dimensions of End Fitting:Per CAN/CSA C411.1-10

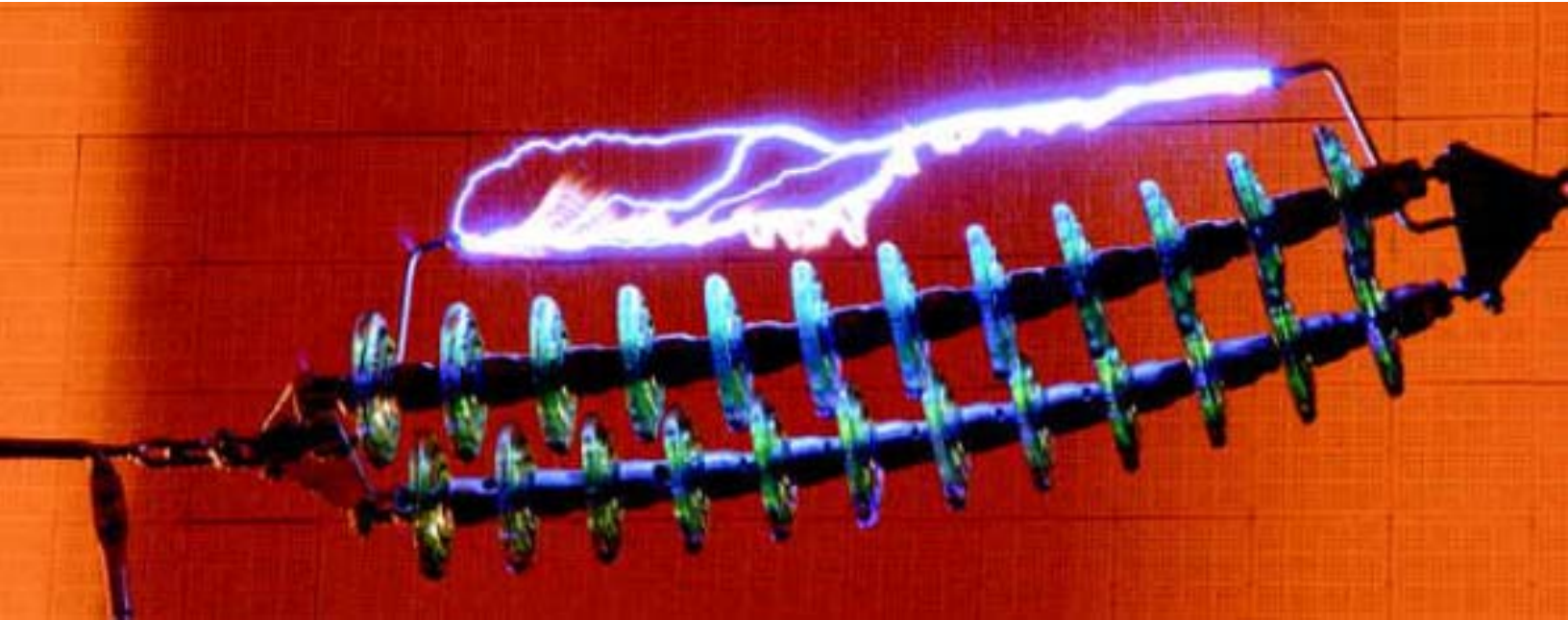
MECHANICAL:

- . Min. SML: 70kN[15736 lb]
- . RTL: 35kN[7868 lb]
- . Min. torsional load: 50N·m[442 lbf-in]

 NANJING ELECTRIC (GROUP) CO., LTD.			
DS-15 Composite Insulator			
DESIGNED & DRAWN	许国坚		Drawing No. LD-961211-340CT
CHECKED	潘兴晨		Catalog No.: NDDS15CT3
APPROVED	张善钢	2015-4-8	Weight: 1.1kg[2.4 lb] Scale: 1:1.5



NANJING ELECTRIC
www.nanjing-insulators.com



Contact Us...

Nanjing Insulators

USA and Canada

4030 Moorpark Ave., Suite 222

San Jose, CA 95117

Tel: 408 850-1416

Fax: 408-519-7091

Email: sales@nanjing-insulators.com

China

No. 63 Taixin Road

Nanjing, Jiangsu, China

Postcode 210038

Tel: 0086-25-85372050

Fax: 0085-25-85322919